

THE PARISH CHURCH OF  
SAINT PAUL  
GRANGE-OVER-SANDS



Matthew 28:6

April 2021

£1.00



## **Normal services at The Parish Church of Saint Paul**

**Sundays - 11.00 am - Parish Service**

**Wednesday - 10.00 am - First of month H/C**

**and at The Fell Church, Grange-over-Sands**

**9.30 am Second Sunday - Matins (BCP)**

**9.30 am - Fourth Sunday - Holy Communion (BCP)**

**Fifth Sunday of the Month**

**Joint Service with St Paul's at 11.00 am in the Parish Church**



### **ST PAUL'S MISSION STATEMENT**

**Our mission is to build confidence in Jesus Christ  
in the heart of the community through prayer,  
worship and learning, in joy and practical service  
to the wider world.**

#### **Team Rector**

**Rev'd Dr Jim Bruce** ([rector.cartmel@gmail.com](mailto:rector.cartmel@gmail.com))

**Tel No**

**07776 821 736**

#### **Team Vicars**

**Rev'd Nick Devenish** - The Vicarage, Priest Lane, Cartmel, LA11 6PU

**36261**

**Rev'd Rachel Stavert** - The Vicarage, Allithwaite, LA11 7QR

**83187**

***The Revd Rachel Stavert is currently on an extended leave of absence.***

#### ***Licensed Lay Readers in the Cartmel Peninsula Team Ministry***

**Steve Bell**, Beckside Barn, Beckside, Cartmel, LA11 7SW

**36789**

**Joyce Leach**, Stoneleigh, 11 Highfield Road, GOS, LA11 7JA

**35297**

**Jenny Leahy**, Studio, Mill House, Lindale, LA11 6LF

**35979**

**Elisabeth Arthurs**, 14 Meadowbank Lane, GOS, LA11 6AT

**35406**

**Diane McGuire**, Cardrona Road, GOS

**07951423789**

**Chris Mason**, 5 Maychells Orchard, Allithwaite, LA11 7PY

**32159**

***Visit our website [www.grangepcc.co.uk](http://www.grangepcc.co.uk)***

***[www.facebook.com/StPaulsGoS](https://www.facebook.com/StPaulsGoS)***

Dear Friends,

This month, God willing, the next step on the horizon in the cautious relaxation of lockdown becomes a reality. It's being continuously talked about, so what is it we are longing for? Just the fact that the shops will re-open? Or is what we're looking for, a situation where the threat is over and it's back to where we were before the pandemic struck like a tsunami?

In 1945, as the country emerged from the 2<sup>nd</sup> World War, those who had lived through six agonising years of danger, uncertainty and going without, longed, I'm sure, for rest, normality and a return to a life they could cope with. And yet, the most exciting thing wasn't merely a return to what life was like before, but about looking for and grasping opportunities, clearing the way for change.

So what about us? As we move through spring towards summer, what do we want from life when lockdown ends and restrictions are eased? Will we have the energy to roll away the boulders, the things that have stood in the way, and truly work together towards creating a different society in which truth, security and fairness are rights for all. If it is, then we've got to do what Jesus told us to do, and not merely notice but do something to help those who have suffered particularly badly during the last year. Where will our priorities as individuals, and as a church, take us?

We will have been reminded in our Easter celebrations that Jesus' resurrection wasn't an end but a wonderful beginning. The world changed for ever at the moment Jesus rose from the grave. It's not just Jesus who is free, but us too, if we are following Him. Maybe we will stand, like Moses, on the mountain top reflecting on where we've been with all the hardships, sorrows, griefs and disappointments that came to the fore as the pandemic struck in waves, each harder than the one that went before. But then from the mountain top we can lift our eyes and look out over the plains of the future and imagine with excitement the new world that could be created if we trust enough to place our hands into God's and go where he leads.

Jesus' resurrection changed the landscape for ever. The resurrection set free the Holy Spirit who empowers us to do so much, if we will allow Him, to forgive, to speak, to love, to build and to enter into the closest intimate relationship with the God who loves us so passionately.

With His help will we be ready to take our part as Christians and as a Christian community in whatever creative newness lies ahead? Perhaps then we will have won a victory over our persistent longing to get back into our comfort zone and, as the members of the early church did, grasp the excitement, challenge and wonder of the new opportunities that God will lay before us.

Let the adventure begin!

With love and prayers,  
Every blessing,  
Revd Sue

St Paul's Church  
Grange over Sands  
**Easter Services**  
**April 2021**



The Church will be open for  
Private Prayer on  
**Good Friday (2<sup>nd</sup> April)**  
from 10.00 am – 3.00 pm

Church will re-open for  
Sunday Services from  
**Easter Day (4<sup>th</sup> April)**  
at 11.00 am, |  
and regularly from then on



## WELCOME BACK

St. Paul's will open again for regular worship on Easter Day, and the Fell Church on the following Sunday (11<sup>th</sup> April). We extend a very warm welcome to everyone who joins us on these days and on subsequent Sundays.

We shall still – alas! – be observing the coronavirus restrictions to which we have become accustomed: wear your mask, report your presence, sanitise, observe social distancing, no chatter in the church before or after the service, and then slip away as unobtrusively as possible.

However, it **IS** Easter Day, our Lord **IS** risen, so hygienically foil-wrapped pieces of home-made Simnel cake will be offered outside St. Paul's on 4<sup>th</sup> April and, of course, foil-wrapped eggs will be available for all. Maybe next year we can again have our Sunrise Service at daybreak followed by toasted hot cross buns.

We shall discontinue the telephone calls which have so wonderfully kept us united in Christ, but we shall continue with the weekly emails (unless you advise us that you do not want to receive them).

Meanwhile, we wish a Happy Easter to everyone with the hope that our virus difficulties will soon be over and we can all resume our normal lives.

**ALLELUJAH. THE LORD IS RISEN, HE IS RISEN INDEED!**



Happy  
Easter

## WHAT'S ON

### MAUNDY THURSDAY—1ST APRIL

Bishop James has written to all clergy explaining that, due to Covid restrictions, this year's Maundy Thursday service at Carlisle Cathedral will be livestreamed via the [Cathedral's Facebook page](#) from 11 am and will also be available to watch later.

### ST PAUL'S CHURCH DIARY - APRIL 2021

#### **Thursday 1st April    Maundy Thursday**

Service - Livestreamed from Carlisle Cathedral, *see page 6*

#### **Friday 2nd April    Good Friday**

St Paul's open for private prayer between 10 am and 3 pm

#### **Sunday 4th April    Easter Sunday**

St Paul's - 11.00 am - Holy Communion CW - The Venerable Penny Driver

#### **Wednesday 7th April**

St Paul's - Holy Communion CW - Rev'd Dr James Bruce

#### **Sunday 11th April    2nd of Easter**

The Fell Church - 9.30 am - Lay-led Service

St Paul's - 11.00 am - Holy Communion CW - Rev'd Dr James Bruce

#### **Sunday 18th April    3rd of Easter**

St Paul's - 11.00 am - Holy Communion CW - Archdeacon Vernon Ross

#### **Sunday 25th April    4th of Easter**

The Fell Church - 9.30 am - Holy Communion BCP - Rev'd Dr James Bruce

St Paul's - 11.00 am - Lay-led Service

*(All Covid precautions to be observed)*





## A THANK YOU

I hope you have found useful the information about the numbers of coronavirus cases in Cumbria, South Lakeland, and the Cartmel peninsula, which has appeared each week on the pewsheet. I have copied these from a post on Facebook by a Victor de Quincey. I am pleased to say that I have finally tracked this gentleman down, and find that he lives just below me – the clue came from a photo he posted of the view of the bay which was taken from his house! He and his wife moved to Grange three years ago. We are also indebted to him for some of the ‘funnies’ that have appeared on the pewsheet and in the magazine. I have now been able to thank him in person.

I find that he is also a talented artist, and he has made a series of sketches of Grange, which are now featured on a tea towel (as below). These are being sold by members of the Lions Club, and will be on sale at the Hospice Charity Shop on Yewbarrow Terrace when that is able to open once again. They cost £8, and the profits are all going to charity.

Penny



In the words of St Clare -

Let us be a mirror of Christ and a footprint of Christ  
For others to see and to follow.

## **POUNDS AND PRIESTS**

### **1. The Pounds:**

In March the PCC approved our accounts for last year. They have now gone forward to our Independent Examiner and will be presented for approval by our members at the Annual Parochial Church Meeting in St. Paul's on 25<sup>th</sup> April.

Not unexpectedly, there is a deficit of over £7,000 on our normal Income & Expenditure for the year, and a five-figure sum (£13,544) when total expenditure is taken into account. The latter covers non-routine work on the organ and church buildings for which separate funds had been established in recent years. Happily, we were able to maintain a good cash position, thanks principally to many friends moving their Stewardship giving from the envelopes which are usually donated in church to regular monthly Standing Orders to our bank.

Looking forward to this year, our giving in the first two months is running at a level below last year: our church lockdown has contributed to this and we shall not be able to hold our usual Spring Fair. So the financial outcome this year does not appear too bright at the moment.

### **2. Priests:**

Readers may know that discussions have taken place in the last few months between Archdeacon Vernon and the churchwardens of the parishes in the Team Ministry area (excluding those from Cartmel who declined to join the meetings) on how best the clergy in the area should be deployed to further God's work. These discussions have been against a background of the pending departure in mid-year of our Interim Team Rector, Jim, and the resolution of the Rev'd Rachel Stavert situation.

After some horse-trading and wide-ranging talks, a solution was reached involving some three full-time priests being made available to the eight parishes in the Team. We had previously been advised that only two full-time equivalent priests would be possible so one wonders if this will really be the confirmed outcome after the plans have been debated at the South Mission and Pastoral Committee and Bishop's Council in May.

(By "full-time equivalent", we mean a full-time stipendiary priest, or two part-time priests or house-for-duty priests: the former offer 3 days per week plus Sunday, the latter 2 days per week plus Sunday).

At the same time, the Diocesan Board of Finance is confirming the worrying drop in diocesan income reported last year, principally caused by the fall in Offers from cash-strapped parishes. Each parish, benefice or mission community will now be expected to meet, through its annual Offer, the cost of the clerics deployed in its area. Additionally, the cost of the Network Youth Church around the deanery must be met. So-called "richer" parishes will be expected to over-contribute where possible to assist the cost of deploying priests in poorer parishes. As a



reminder, the cost of a priest this year is just less than £64,000; a house-for-duty cleric costs some £19,000.

### **3. Where does this leave us?**

The agreement referred to above showed one full-time priest to look after Allithwaite and Flookburgh, a half-time priest for Cartmel, and one and a half priests for Grange and the four northern parishes of Field Broughton, Finsthwaite, Haverthwaite and Staveley.

However, a look at the Parish Offers reveals that it will be extremely difficult, if not impossible, to meet the requirement of full financial support, with the exception of Cartmel who will be asked to continue their current generous contribution to diocesan funds.

If we wish to press for more priestly support in our parish life, it is important that we show a strong financial commitment towards the cost. A glance at the levels of contributions from other local parishes shows that there are some who, in regard to numbers on their electoral rolls, contribute some 50% more generously than we do (and there are others who contribute a lot less).

The position at the moment is that each individual on our Electoral Roll gave on average £5.54 per week last year; this year, so far, it has dropped to £4.76. As a guide, our weekly costs last year (normal expenditure, including our parish offer of £36,294) across our two churches were just over £1,219.

### **4. What can we do?**

The age-related Government pension increases in early-April by 2.5% (thank you, Prime Minister). Can we ask you, please, to review what you are paying and increase it as generously as you feel able, by adjusting the Standing Order through your bank or contributing more in your envelopes. Unless we can raise our Offer to the diocese next year by a meaningful sum, it will be hard to continue to argue and press for the clerical support that we need.

Mike



The need for our support is stronger than ever. Although we have not yet restarted our regular bi-monthly collections in Grange, two collections are being organised in April outside the Methodist Church—between 10 am and noon on Friday, 9th, and Saturday, 17th.

Donations can also be left at St Mary's Church, Allithwaite, any Monday between noon and 2.00pm, or can be collected from your house if you call Sue (35157) or Isabel (35950). Several people have kindly offered to drop off food in Barrow when there is a reasonable amount. Monetary donations can be made via the website—[barrow.foodbank.org.uk](http://barrow.foodbank.org.uk)

## ST PAUL'S FONT AND PEDESTAL

An unfortunate accident took place last December when a visitor entered the church through the side door from the corridor outside Linda's office (despite the No Entry and No Access to Church signs!) in order to take some photographs of the Christmas Tree Festival.

It was a grey morning, the church was still closed to visitors and therefore quite dark and, by using the side entrance, the light sensor at the main church entrance was not triggered so the church remained unlit. The visitor was concentrating on her photography, and did not see the pedestal at the rear of the font (which is there so that the officiant has adequate space at an appropriate height in order to perform the baptism). She tripped, fell, badly bruising her face and nose.

The doctor whom she visited immediately after the incident was concerned about a possible broken nose or longer-term damage to one of the lady's eyes. Happily, no long-term damage actually resulted.

The PCC is being urged to place coloured safety tape around the font and pedestal in order to avoid any further incident of this nature. We raised this suggestion with the Parish Architect during the recent Quinquennial Inspection when he was visiting the church. His view was that coloured tape placed around a fitment in a Grade 2 Listed building was not appropriate and his suggestion was that we should place some item – a chair, a vase, two kneelers – on the pedestal as a means of drawing visitors' attention to this potential hazard. This suggestion will be considered by the PCC at their next meeting.



## BOTTLE BOTTOM APPEAL – LOOKING AHEAD!

I am hoping to create an outdoor poppy display in front of church to commemorate Armistice Day, November 2021. Inspired by a display in Scales, Ulverston, it will consist of clear plastic bottle bottoms painted bright red.

However, I can't drink sufficient lemonade, coke, tonic, soft drinks or sparkling water alone! I need your help to collect enough bottoms to make a vibrant display. Please leave with

Sue Fleetwood, Linda in the Office, or contact me directly to arrange collection.

Philippa Woon (07786902075)

## FROM THE REGISTERS

### BAPTISM ANNIVERSARIES FOR MARCH

Joseph Jeffery Robinson 22nd April 2018

*"Born of Water  
and the Spirit"*



### YEARS MIND - MARCH

Beatrice Mary Guest

7th April 2016

Marion Millican

7th April 2016

Heather Margaret Gill

27th April 2017

John Alexander Nightingale

9th April 2018

Jean Margaret Broadhead

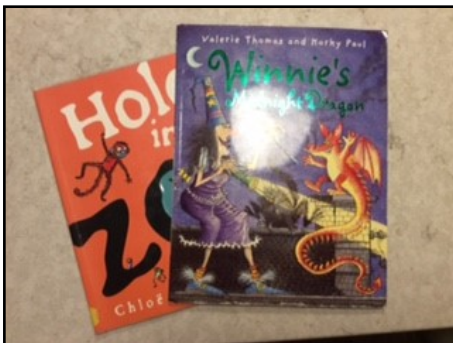
15th April 2019

*"In sure and certain hope  
of the resurrection to  
eternal life through our  
Lord Jesus Christ"*

## VIDEO STORY TIME FOR GRANGE SCHOOL

During normal times as Foundation Governor I visit the school on a regular basis for assemblies and help with reading, etc, every week, as do some other parishioners. As governors we also have a rota to open the school library after school on a Friday for parents and children to loan books, and to encourage more reading for the children. During the pandemic, of course, all this had to stop.

Governors have now been asked to send in story-telling videos of children's books, including poems, and if any parishioners would like to video themselves reading any children's stories this would be appreciated. I've read 'Winnie's Midnight Dragon' and 'Hole in the zoo', which were lovely stories, and Brian McCann (Chair of Governors) and Gill Webster (Foundation Governor) have also sent in videos.



Also, any short stories from your life that might be of interest would be really useful too, eg experience of evacuation in WW2.

We look forward to the return to 'normal life' and to going into Grange school, but in the meantime we all adapt!

Judith Mitchell

*COLIN'S COLLECTION OF COUNTRY CHURCHES TO COMBAT  
COVID 19 "COLLISOLATION"  
OR...C.C.C.C.C.C.C.*

No.12

Rydal Church, (St Mary's at Rydal)



Turn off the main road between Ambleside and Grasmere and there is Rydal Church, or to be precise the 'Chapel of Ease'. It is dedicated to St Mary and was built in 1824 with funds from Lady Le Fleming of nearby Rydal Hall. The Le Fleming family had owned this large house since it was constructed in the 16th century and were very influential in this part of the Lake District. It is assumed that Lady Le Fleming wanted a sort of private chapel for her own family usage, and consulted a nearby resident living at "Rydal Mount" called William Wordsworth. At first Wordsworth was a little confused at the need for a church here since there were no more than about ten houses which made up the hamlet of Rydal. However, he became persuaded and a portion of rocky ground beneath "Nab Scar" was identified and consequently the church was built. Because of the rocky ground it was impossible to dig graves to bury the dead here, hence the building only ever gained the status of 'Chapel of Ease'.

Today the church stands majestic surrounded by lawns, rocky outcrops and ornamental gardens. Inside it is quite simple with plastered walls, a false ceiling to hide the roof joists and beams, and some very beautiful stained-glass windows. The latter were installed on the south side of the church in memory of different members of the Le Fleming family. This place is visited each year by thousands of visitors, many of course encouraged to the location because of the Wordsworth connections.

Before the church was built, William and Dorothy Wordsworth had purchased some land behind its eventual site with the intention of building a residence here that never materialised.

The Wordsworth family rented a close-by house known as ‘Rydal Mount’, and once the church was completed they all worshipped here; William was even made churchwarden at Rydal for the year 1833 to 1834.

Sadly in 1847 William’s beloved daughter Dora died unexpectedly, and in her memory thousands of daffodils were planted behind the church. Every April these bloom in magnificence! It is now famously known as “Dora’s Field” and is looked after by the National Trust. The daffodils are of the old English variety and are a splendid sight.

*“Ten Thousand I saw at a Glance”*



And

*“They flash upon that inward eye, which is the bliss of solitude”*

Famous lines made immortal by the poet himself, but of course the inspiration came to him not from this location but upon walking by Ullswater one April morning.

It is a most majestic site to see Dora’s Field in full profusion, and indeed the finest time of all to visit Rydal Church. When William Wordsworth died in 1850 at Rydal Mount, his sister Dorothy wrote in one of her journals of her sadness that her brother could not be buried here in the churchyard. His body with the mourners following set off along the track behind Rydal Mount, on what is known as “The Coffin Route”, to walk the two and a half miles to Grasmere Church for his funeral and burial. This is the commencement of a glorious walk circumnavigating Rydal Water, eventually coming back to Rydal Church. The trek is most rewarding; and a tip for those who do visit the church and this area is to find the marvellous café behind Rydal Hall for a well-rewarding snack! Visitors to the café help to finance the upkeep of the Hall which today is owned and run by the Diocese of Carlisle as its conference and retreat centre. Rydal Church is still open for regular worship, especially in the summer months, and is well known for its own speciality of “Taize”-style services with candles, chanting and time for reflection. I suspect that, if William Wordsworth were to come back and experience this type of service, he would not recognise it; he might be somewhat confused! Nevertheless a worthy place for a late April stroll - once our “Lockdown regulations” start to ease!



Colin

*(See photograph on page 23, of some congregation members from the Cartmel Peninsula Team Ministry churches gathered at Rydal – happy times indeed!)*

*PS It was good to see that the Diocesan Synod have voted overwhelmingly to retain the hall as part of the Diocesan Vision and Strategy.*

## KATHERINE HEPBURN, IN HER OWN WORDS

"Once when I was a teenager, my father and I were standing in line to buy tickets for the circus. Finally, there was only one other family between us and the ticket counter. This family made a big impression on me.

There were eight children, all probably under the age of 12. The way they were dressed, you could tell they didn't have a lot of money, but their clothes were neat and clean.

The children were well-behaved, all of them standing in line, two-by-two behind their parents, holding hands. They were excitedly jabbering about the clowns, animals, and all the acts they would be seeing that night. By their excitement you could sense they had never been to the circus before. It would be a highlight of their lives.

The father and mother were at the head of the pack standing proud as could be. The mother was holding her husband's hand, looking up at him as if to say, "You're my knight in shining armor". He was smiling and enjoying seeing his family happy.

The ticket lady asked the man how many tickets he wanted? He proudly responded, "I'd like to buy eight children's tickets and two adult tickets, so I can take my family to the circus". The ticket lady stated the price. The man's wife let go of his hand, her head dropped, the man's lip began to quiver. Then he leaned a little closer and asked, "How much did you say?" The ticket lady again stated the price.

The man didn't have enough money. How was he supposed to turn and tell his eight kids that he didn't have enough money to take them to the circus?

Seeing what was going on, my dad reached into his pocket, pulled out a \$20 bill, and then dropped it on the ground. (We were not wealthy in any sense of the word!) My father bent down, picked up the \$20 bill, tapped the man on the shoulder and said, "Excuse me, sir, this fell out of your pocket".

The man understood what was going on. He wasn't begging for a handout but certainly appreciated the help in a desperate, heartbreaking and embarrassing situation.

He looked straight into my dad's eyes, took my dad's hand in both of his, squeezed tightly onto the \$20 bill, and with his lip quivering and a tear streaming down his cheek, he replied; "Thank you, thank you, sir. This really means a lot to me and my family".



My father and I went back to our car and drove home. The \$20 that my dad gave away is what we were going to buy our own tickets with. Although we didn't get to see the circus that night, we both felt a joy inside us that was far greater than seeing the circus could ever provide.

That day I learned the value to give.

The giver is bigger than the receiver. If you want to be large, larger than life, learn to Give. Love has nothing to do with what you are expecting to get - only with what you are expecting to give - which is everything.

The importance of giving, blessing others can never be over emphasized because there's always joy in giving. Learn to make someone happy by acts of giving.”



**If you ever need support, Age UK is here for you.**

Our free Advice Line is open 7 days a week, 8am-7pm on 0800 169 65 65. Or, if you're feeling lonely and want a friendly chat, day or night, you can call **The Silver Line on 0800 4 70 80 90.**

You can also find out information about coronavirus, lockdown rules and vaccinations on our [website](#).

Age UK provides information and advice on every facet of later life, from helping people find out benefits they are entitled to claim, to discussing options to help make later life at home more manageable. Our aim is to be the first port of call – the first place that people turn to when they have an age-related need.

Another number to ring—

**HELPLINE 03030030003**

Website: [www.ageuk.org.uk/campaigns](http://www.ageuk.org.uk/campaigns)

Twitter: [@ageukcampaigns](https://twitter.com/ageukcampaigns)

## TOUCHING EMAIL

A touching and poignant email from Helena Edwards, friend of Sarah Everard, which is worth reading. Since that evil and tragic murder some horrible things have been said and done, pitting women against men and anarchists against the police. Read what Helena Edwards says:

"Since we learned of Sarah's disappearance, this experience has been hard to put into words. It's not something anyone would ever imagine having to deal with. But now, as brutal as the outcome is, we have some answers. It's shocking and devastating. But I would rather know than never find out what happened to her, so we can begin the long, painful grieving process.

When I first heard of the vigil for Sarah on Clapham Common I was looking forward to attending – it felt good to be able to 'do something' and express my love for Sarah and my sorrow for what has happened to her. Less than a day later, I decided not to attend, as have many of her friends. I can't speak for all of them, but my reason for not attending is this: my friend's tragic death has been hijacked. It is not a tribute to her any more, it's about something else – and I don't like what it has become.

Sarah was a victim of one of the most horrific crimes imaginable. She was extremely unlucky – that is all there is to it.

Her abduction and murder is not, in my opinion, a symptom of a sexist, dangerous society. When something awful like this happens there is a rush to look for reasons and apportion blame. If the suspect police officer in custody is eventually tried and found guilty of her murder, then I will hold him alone responsible. I will not be blaming 'men' or 'the police' for the actions of one individual. There will always be the odd psychopath out there – male or female – and there can be no accounting for that fact.

Sarah had many wonderful men in her life. Several of them were absolutely instrumental in the hunt for her, raising awareness online and in the local area, and out physically searching for her at the beginning. They are just as horrified as everyone else by what has happened.

I don't think Sarah would have wanted them, or men in general, to be smeared with the same brush as her attacker. Most people, and indeed men, are good. They would never wish harm on anyone else, let alone attack or kill someone. Despite what has happened to Sarah allegedly at the hands of this man, I will continue to believe that.

The suggestion by a Green Party peer, that all men should be under curfew after dark to help women feel safer on the streets, is one of the most ridiculous things I have ever heard. I would have laughed at it if it wasn't such an utterly awful situation. Sarah was a humble, private and sensible person (among many other things!), and I feel certain she would not agree with the circumstances of her disappearance being used to promote these kinds of ideas.

I also wish to publicly praise the police conducting this investigation. They have done their job brilliantly, and although sadly it is too late for Sarah, I am grateful they are finding us some of the answers that we so desperately need. I am sure they are equally stunned and appalled that this awful crime seems to have been perpetrated by one of their own.

As for us, her friends? Let us grieve for our loved one, brutally taken in such an awful way. The public reaction to her death has been overwhelming, and for the most part very touching. But be assured, the misuse of it by those with an 'agenda' is not a comfort to us.

As a 33-year-old woman, what will I take from this? I am reminded that life is short, and I will try to live mine to the full. Of course, I will be sensible and maybe take a few more taxis than I used to. But I will not live in fear. As soon as lockdown is over, I am going to go out, celebrate, get drunk with my mates in a pub. I will dance, laugh, cry, hug people and be grateful that I am alive. I will miss my friend deeply. I am so sad she will never see the end of lockdown and, as her friends, we will never get to enjoy these experiences with her again."

Thank you Helena Edwards! There are issues around policing of course. And there are issues around the protests which saw 26 police officers assaulted, let alone the spread of the pandemic.



## SPECIAL DELIVERIES FOR SPECIAL DAYS

Over 100 posies were delivered around the parish on **Mothering Sunday**, having been put together by a small group of volunteers! Below are some of the comments we received back.

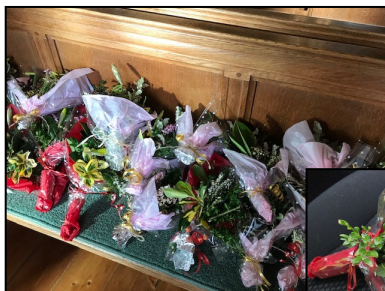


*A lovely surprise!*

*Appreciated even more this year as we continue to be separated from our families*

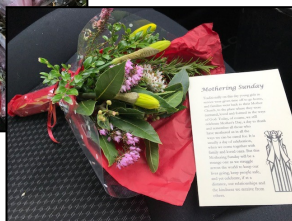


*My posy is beautiful—the daffodils are out!*



*Thank you for the posy and the lovely thought behind it*

*The words of the prayer are so meaningful*



*Thank you for going to the trouble of getting a posy to me*

And a quote from a volunteer—'the reception I got was worth all the hard work!'

*How kind of you to reach out to the rest of us at St Paul's with love and Christian spirit*

*How kind of you to think of me*

And for **Palm Sunday**

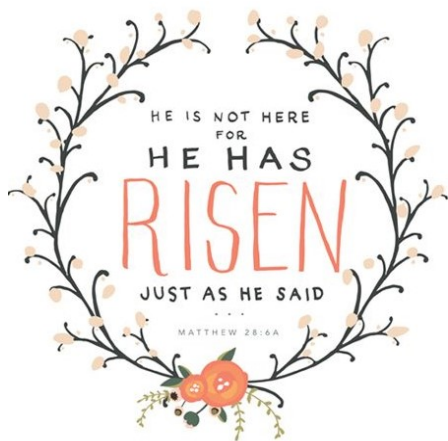
*So happy to receive my posy*



**HOSANNAH !**  
**BLESSED IS HE WHO COMES IN**  
**THE NAME OF THE LORD**



*It is lovely to be 'thought of' in these difficult times*



## RESURRECTION

Easter. The grave clothes of winter are still here, but the sepulchre is empty. A messenger from the tomb tells us how a stone has been rolled from the mind, and a tree lightens the darkness with its blossom. There are travellers upon the road who have heard music blown from a bare bough, and a child tells us how the accident of last year, a machine stranded beside the way for lack of petrol, is crowned with flowers.

*R S Thomas*

Daily Hope, a free national telephone line, offers music, prayers and reflections as well as full worship services from the Church of England at the end of the phone—for those without access to the internet.



## MALCOLM GUITE

A sonnet from Malcolm Guite, who had received a message from a lady in Wuhan, who had tested positive for the virus and was self-isolating. Guite writes that she wrote how she had found such comfort from one of his sonnets, 'Julian of Norwich'. She explained that she was a Christian teacher at the International School and found herself, without choice, walled-in behind the city walls, and further enclosed within her room, as she had symptoms, looking out through a window and receiving food through a hatch....What could she do but read and pray? Her thoughts turned to Julian, because she was a woman who had actually **chosen** just such enclosure as this lady was enduring. Julian was a woman in a city often menaced by plague, ill herself, who through her illness and isolation sought and found a greater closeness to Jesus. An anchoress, finding again her anchor-hold, in God.

Guite writes : *'....So I hope these words, which I composed years ago in Julian's little cell in Norwich and which found their way to Wuhan, might also be useful to some of us now, wherever we might happen to be walled in.'*

*Show me, O anchoress, your anchor-hold  
Deep in the love of God, and hold me fast,  
Show me again in whose hands we are held,  
Speak to me from your window in the past,  
Tell me again the tale of Love's compassion  
For all of us who fall onto the mire,  
How he is wounded with us, how his passion  
Quickens the love that haunted our desire.  
Show me again the wonder of at-one-ment  
Of Christ-in-us distinct and yet the same,  
Who makes, and loves, and keeps us in each moment,  
And looks on us with pity not with blame.  
Keep telling me, for all my faith may waver,  
Love is his meaning, only love, forever."*





## Will you help to create a 'greener' Cartmel Peninsula?

We are sending out letters about **Greening Cartmel Peninsula**, but we know that with many business premises closed, it might be hidden in a mound of post and we don't want your organization to miss the opportunity to join this exciting community project.

Our community wants to join together to make a difference to help our environment. We believe that coming out of lockdown, we should be looking to a better, kinder, cleaner future, and we want to start building that future now. We are going to hold an on-line public meeting where we will learn how we can make a difference through the **Greening Campaign**, which has been successfully run in over 100 communities. It has the support of SLDC and our town and parish councils. Our aim is to take the hugely successful, tried-and-tested campaign and to introduce it to our peninsula. Peninsula Environmental Action Together – **PEAT** – are facilitating the process to make it easy for everyone to take part.

### What is the 'greening' campaign?

Put simply, the campaign aims to encourage and support local people and businesses to take simple, straightforward steps to reduce energy consumption and waste – we will all see who is taking part and we will have great fun encouraging each other to make meaningful changes.

### On-line Public meeting: Wednesday, May 5<sup>th</sup> at 7pm

To kick off the campaign, we are holding an on-line public meeting where Greening Cartmel Peninsula will be explained in detail. Terena Plowright, founder of The Greening Campaign, will be joining our meeting to explain what positive things are involved. Those attending the meeting will be invited to help choose a number of simple actions they consider to be most relevant to the community and which will enable people to make a difference to our environment today – and long into the future. And we will also organise a front garden/shop window event over the summer!

### Who is invited?

Please accept this letter as your personal invitation. The meeting is open to everyone who lives or works in the Cartmel Peninsula and so all businesses, societies, churches and schools – as well as elected bodies – are invited to send representatives. Please let your members and associates know!

We believe this is an important campaign that could benefit us all – individuals, families, organisations and businesses and bring the community as a whole together after a long year of restrictions and isolation. We want the process to be easy and **fun**! We would be delighted to see you or a representative of your organisation at the meeting.

## We're keeping it light

We aim to make this a concise meeting lasting no more than 1 hour. Please let me know if you believe you will be joining us so we can be sure to give you updates. If you have any questions, please email [peatgreening@gmail.com](mailto:peatgreening@gmail.com). You can also find information about **PEAT** and **Greening Cartmel Peninsula** on our blog, [peatsouthlakes.blogspot.com](http://peatsouthlakes.blogspot.com)

Yours sincerely,

***Alison Hinds*** (on behalf of **PEAT**)



### ATTRIBUTED TO W WORDSWORTH

I wandered lonely as a cloud,  
Two metres from the madding crowd,  
When all at once my name was called  
To enter Waitrose hallowed hall.



This was the pensioners' special hour  
I'd gone to get a bag of flour,  
But I forgot -when through the door -  
What I had gone to Waitrose for ?



The Waitrose staff are extra kind  
I told them it had slipped my mind,  
They asked what else I had forgot  
They clearly thought I'd lost the plot.



I phoned my wife again to ask  
She reminded me of this special task  
"I need some flour to bake a cake  
With all that cream you made me take!"

"Ah yes, I recall" - I had to lie,  
I dared not ask what flower to buy,  
But then I saw them at the tills  
A bunch of golden daffodils.



**“At Rydal Hall”**

(Photo referred to in the Rydal Church article on page 13).

What year? How many can you still identify? What were we doing? And who on the photo is the Hall manager today?)

## **Spreading the word**

You may be interested to know that we have readers of our pewsheets and magazines as far afield as Canada, Cyprus, Tasmania, Malta and the USA, and in this country Glasgow, Nottingham and Oxford. They are being sent via email or the web site, and even by ‘snail’ mail! Always encouraging to know that folk are finding our missives useful.

The booklet about the history of the Fell Church has recently been reprinted. For a copy, contact Emma Bennie (01539 824525).

## **I FINALLY DID IT!**

**Bought a new pair of shoes with memory foam insoles...  
No more forgetting why I walked into the kitchen!**

If you would like to advertise in St Paul's Parish Magazine  
Please contact the Team Office on 015395 35560  
or e-mail details to [stpaulschurchgrange@gmail.com](mailto:stpaulschurchgrange@gmail.com)  
or [cptmoffice@gmail.com](mailto:cptmoffice@gmail.com)

## GRANGE OVER SANDS MONTHLY RAINFALL (MM) - ANDREW LITTLE

	2014	2015	2016	2017	2018	2019	2020	2021
January	163	154	141	98	142	73	107	186
February	115	76	125	91	69	99	263	139
March	61	110	107	162	60	182	75	94*
April	58	46	72	15	98	39	12	
May	62	165	32	75	37	52	26	
<b>June</b>	<b>28</b>	<b>34</b>	<b>185</b>	<b>135</b>	<b>19</b>	<b>91</b>	<b>99</b>	
<b>July</b>	<b>70</b>	<b>69</b>	<b>113</b>	<b>126</b>	<b>33</b>	<b>134</b>	<b>169</b>	
<b>August</b>	<b>124</b>	<b>112</b>	<b>168</b>	<b>86</b>	<b>108</b>	<b>180</b>	<b>188</b>	
September	6	29	118	177	133	177	66	
October	156	60	31	172	131	160	165	
November	97	246	118	189	62	85	114	
December	103	352	65	109	160	155	126	
Annual <b>Totals</b>	<b>1,043</b>	<b>1,453</b>	<b>1,275</b>	<b>1,435</b>	<b>1,052</b>	<b>1,433</b>	<b>1,408</b>	<b>419</b>

\* means incomplete total till next month

## SINGING FOR MEMORY

Aims to strengthen memory and language through singing in a  
relaxed and friendly atmosphere.

Run by Grange Soroptimists.

**Ring Janice - 58001 or Isabel - 36378 to book or for further information**

The sessions are currently being held on-line via Zoom.  
If you would like to take part, ring Janice (58001)



## Em J's Hair Studio

We are open as usual

Monday to Saturday

For an appointment

Tel: 015395 34295

Kents Bank Road

## J P Computers

**FREE** Consultation

Collect & return service

Based in South Lakes

Tel: 015395 35513 /

07964180021

[www.johnparrycomputers.com](http://www.johnparrycomputers.com)

*Branton Wild*

### **WATCH & CLOCKMAKER**

14 Church Street

LA7 7DX Milnthorpe

[branton.wild@gmail.com](mailto:branton.wild@gmail.com)

Mobile 07484 788495

Restoration - House calls - Buy & sell

Luxury watch repairs

Battery replacement

### **Paul Brown Handyman**

**Property Home**

**& Garden Service**

Tel: 015395 36646

M: 07812367287

**WR**

### **Wilson Robinson**

**CARPETS**

**FLOORING**

**CURTAINS**

**UPHOLSTERY**

### **SIMON BAKER**

2 Birchleigh Terrace

Kents Bank Road

Grange over Sands

LA11 7EY

015395 32894

[wilsonrobinson@btconnect.com](mailto:wilsonrobinson@btconnect.com)

### **Denise Muir MAFHP**

**MCFHP**

Tel: 0797 134 3395

### **Positive Steps**



For all aspects of Nail and Foot Care  
Nail Trimming, Callous (Hard Skin),

Reduction & Corn Elimination,

Treatment for Fungal Nails,

Athlete's Foot & Verruca

**Monday Afternoons at**

**Em J's Hair Studio**

**Home Visits Tues—Fri**

**REFLEXOLOGY AVAILABLE**

# Thornleigh

## Christian Hotel

### Themed Breaks

### Conference Centre

We look forward to  
seeing you soon.

Welcoming, Refreshments,  
Fellowship, Peaceful Spaces  
Friendship, Christian books  
& gifts, Spiritual,  
Sunday lunch  
Inspirational Views,  
Accommodation

**Tel: 015395 32733**



**HIGGINSONS**  
of GRANGE

ONLINE  
CLICK &  
COLLECT  
ORDERING

Supplying the finest fresh meats  
& legendary, hand-made pies  
to the people of Grange since 1983!

#### Seasonal Special

Saltmarsh Lamb  
Reared on the shores of  
Morecambe Bay  
Full range of cuts & joints

#### We stock:

- \* Hand made Pies
- \* Award Winning Sausages
- \* Home-cured Bacon
- \* Heritage Beef
- \* Rare Breed Pork

**NOW OFFERING BESPOKE  
CELEBRATION &  
TIERED WEDDING PIES!**



t: 015395 34367

w:higginsonsofgrange.co.uk

CHANCERY HOUSE  
KENTS BANK ROAD  
GRANGE-OVER SANDS  
LA11 7HD

**gedye**  
& SONS

TRADITIONAL SOLICITORS SINCE 1903



PROPERTY - WILLS - ESTATE PLANNING  
PROBATE - LITIGATION - POWERS OF ATTORNEY  
Tel: 015395 32313 Email : [info@gedye.co.uk](mailto:info@gedye.co.uk)

## GARY PORTER & SON

### PAINTERS & DECORATORS

Established 1997

Interior & Exterior work to a  
high standard



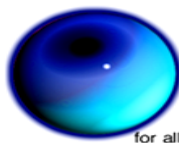
**FREE Estimates**

Grange over Sands

Tel: 015395 32253

M: 07794167285





**MS** millennium  
computer  
solutions

for all your computer needs

- **Computer Repair Specialist**
- **Onsite Repairs & Upgrades**
- **Fast Turn around on all Repairs**

## Rapid Computer Support

For Home and Business ESTABLISHED 1998

- **Fixed Prices Repairs, No hourly charge**
- **New PCs, Laptops and Tablets**
- **Wired & Wireless Networks,**
- **Support / Repairs for PCs, Laptops, Macs, Ipads, Tablets**
- **Broadband Installation and Repairs**

Remote Support from £10 - Workshop Repairs - Onsite Repairs  
Fixed Price Labour Charges No Hourly Charges

www.pcsupport-uk.com 127 Main St, Warton, Camforth  
info@pcsupport-uk.com Open 9.00 - 6.00 Mon - Sat

**01524 733970**

Call in and see your local friendly electrical retailer

## ROBINSONS ELECTRIC

### SALES, SERVICE & REPAIR

Satellite, TV, Audio, Lighting, White Goods, Electrical Appliances

**Both large & small**

Birchleigh, Kents Bank Road, Grange-over-Sands



Care & Support  
Services LTD

**South Lakes 015395 52548**

www.heydayscare.co.uk

Est. 2011 in Grange-over-Sands

Your local provider of outstanding  
home care!



Our dedicated staff provide a flexible range of services  
to clients in their own homes, including:

- Dementia Care • Palliative Care • Personal Care
- Shopping services • Meal Preparation • Medication collection
- Domestic Help • Companionship • Night Care • Respite Care

**Now also covering LEVENS, WITHERSLACK,  
HEVERSHAM & MILNTHORPE**



**Miniheat Ltd.**

Est. 1968

**PLUMBING AND HEATING  
ENGINEERS - GAS SERVICE  
AND REPAIR - NG/LPG**

2 DEVONSHIRE PLACE,  
KENTS BANK ROAD,  
GRANGE-OVER-SANDS

**015395 32053**  
office@miniheat.co.uk

**Please support our  
Advertisers & Local  
Shops at this time of  
uncertainty**

## **USEFUL TELEPHONE NUMBERS**

<b>Churchwarden</b>	
Mike Hill, Linden House, Linden Fold, GOS LA11 7AY	33511
<b>Deputy Wardens</b>	
Margaret Ratcliffe, Strand Court, The Esplanade, GOS LA11 7HH	35587
<b>Treasurer</b>	
Maureen Chadwick, 5 Crown Hill, Main Street, GOS LA11 6AB	32343
<b>Parish Safeguarding Officer</b>	
Judith Mitchell, Silverdale, Highfield Road, GOS LA11 7JB	35664
<b>Fell Church</b>	
Please contact either the Churchwarden or Deputy Churchwarden	
<b>Organist and Choir</b>	
Vacant	
<b>Parochial Church Council Secretary</b>	
Rosemary Hoyle, 8 The Croft, Flookburgh, LA11 7NF	58108
<b>Team Office / Parish Administrator</b>	
Linda Brown	35560
Tue, Wed & Thur - 9.00 am-12.30 pm Fri - 9.00 am - 1.00 pm	
<b>E-mail</b> - <i>stpaulschurchgrange@gmail.com</i> or <i>cptmoffice@gmail.com</i>	
<b>Magazine Co-ordinator</b>	
Penny Ward, The Boulders, Charney Well Lane, GOS LA11 6DB	33243
<b>Children's Society Local Secretary</b>	
Judith Mitchell, Silverdale, Highfield Road, GOS LA11 7JB	35664
<b>Bible Reading Fellowship Representative</b>	
Jose Baguley, 2 Churchgate, Grange Fell Road, GOS LA11 6AN	35162
<b>Stewardship Secretary</b>	
Chris Brown, 18 Winfield Gardens, Allithwaite, LA11 7DF	015393 24015
<b>Magazine Editor</b>	
Team Office	35560
<b>e-mail</b> - <i>stpaulschurchgrange@gmail.com</i>	
<b>Missions Secretary</b>	
Rosemary Hoyle, 8 The Croft, Flookburgh, LA11 7NF	58108
<b>Flowers</b>	
Kath Bush	32601
Audrey Gorman	35209